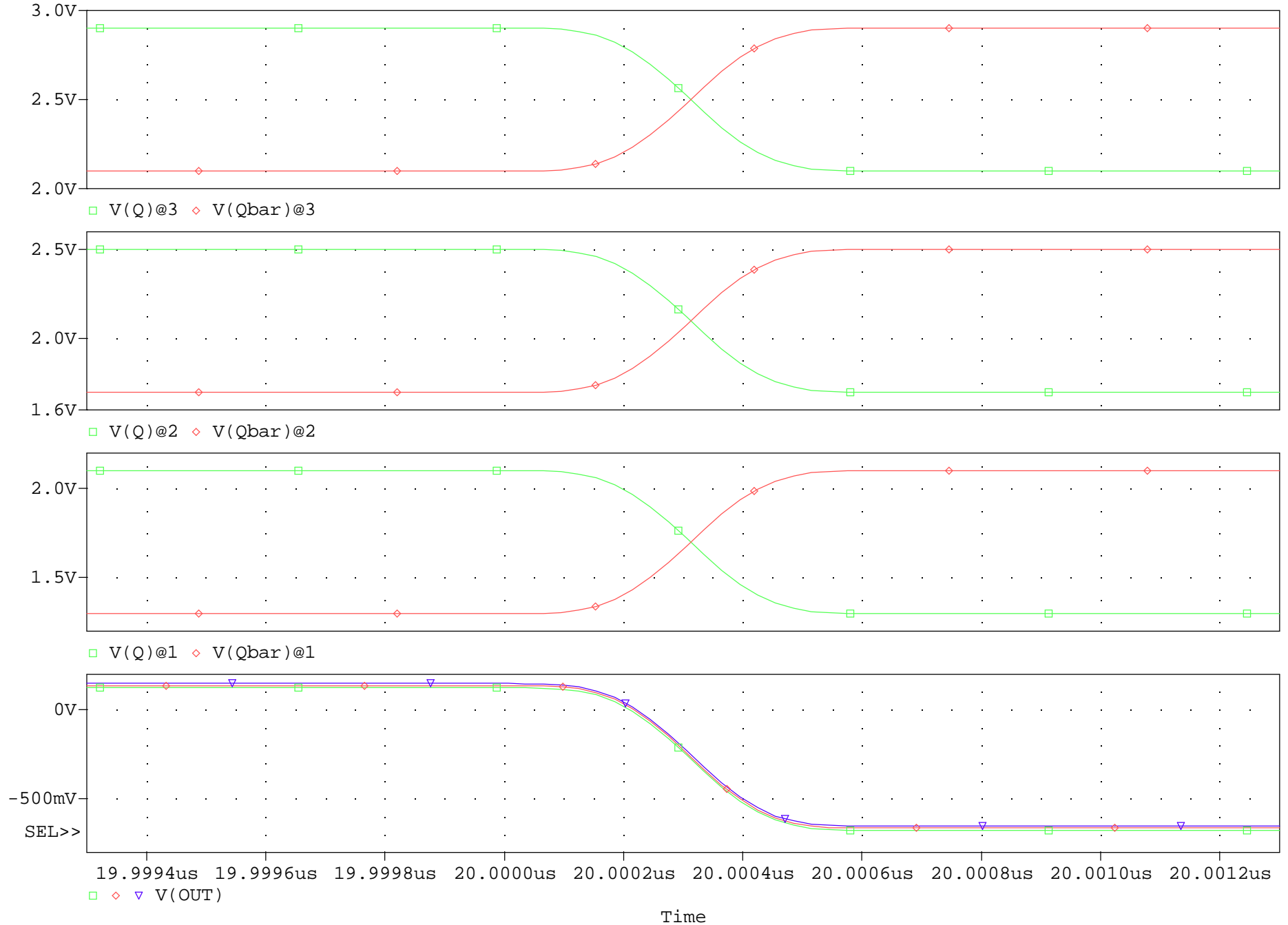
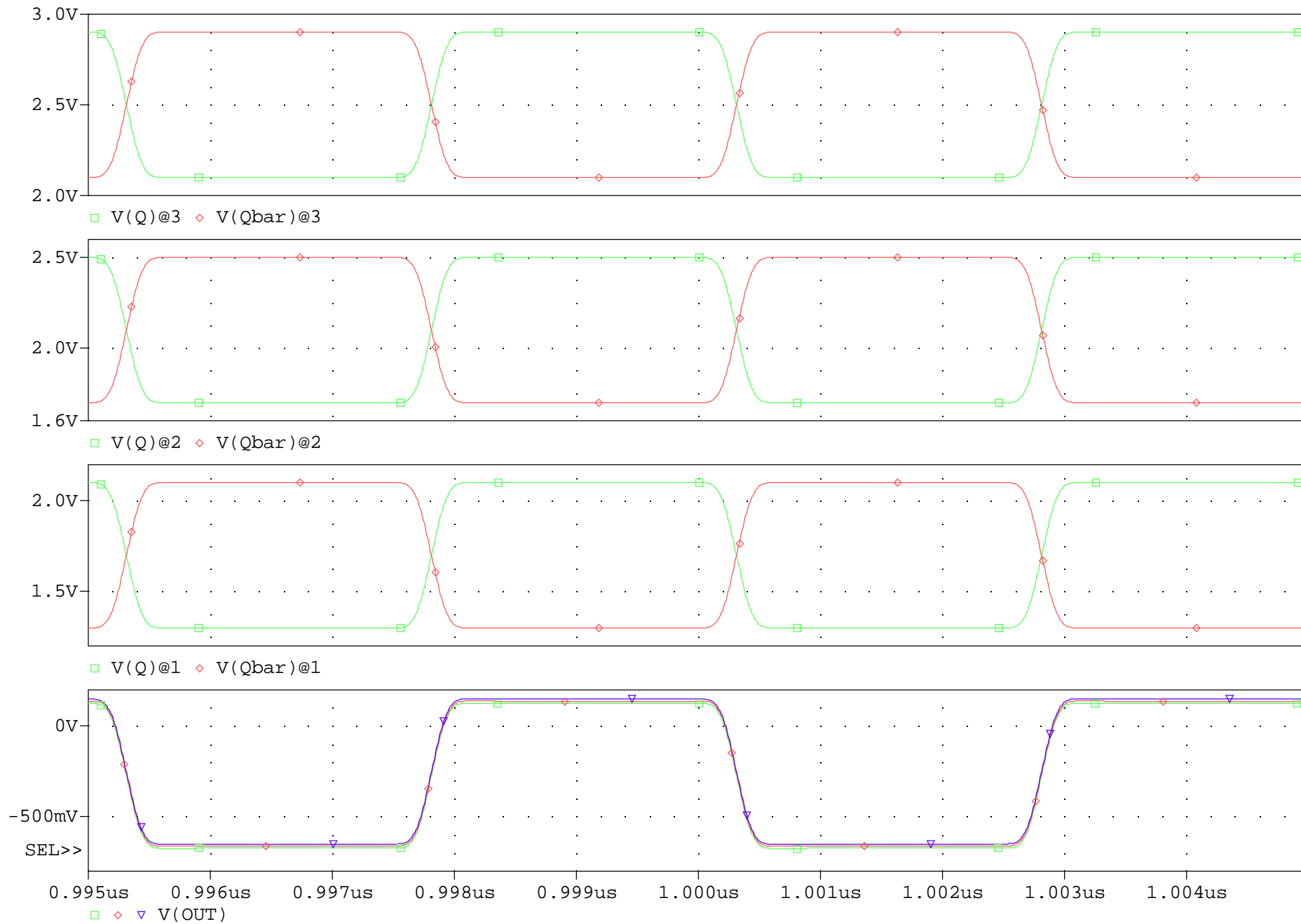


		ANALOG INNOVATIONS, Inc. 824 E. CATHEDRAL ROCK DRIVE PHOENIX, AZ 85048-6300 (480) 460-2350 FAX: (602) 557-0890	
Title: LevelShift, PECL to PHEMT, Independent of VCM... Transistor Mirrors			
Size	FileName:	REV	
A	...\\SED\\LevelShift_PECL_to_PHEMT_Mirror_Mirror.sch	A	
March 10, 2012, 10:22 AM		Sheet 1 of 1	

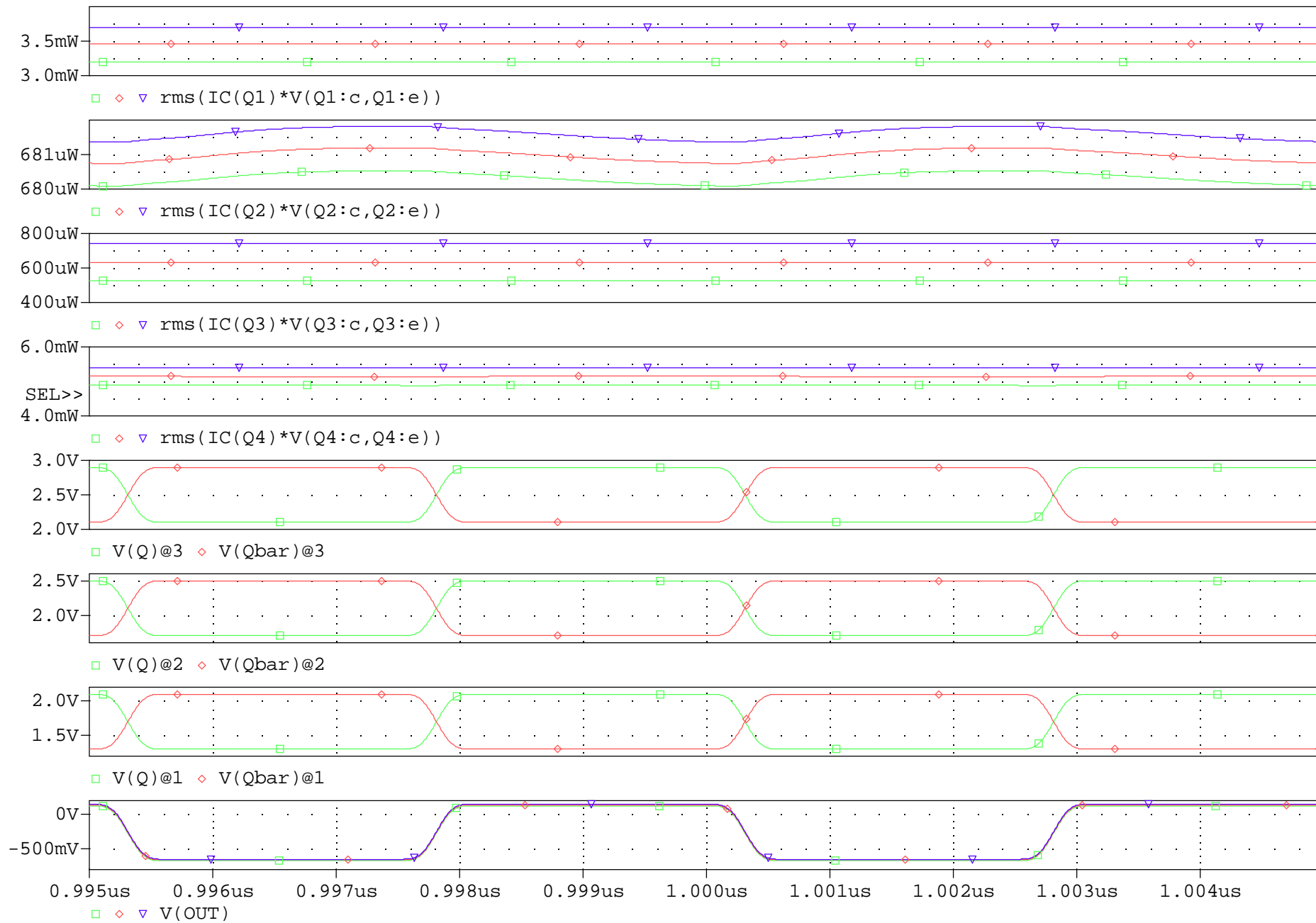
LevelShift_PECL_to_PHEMT_Mirror_Mirror

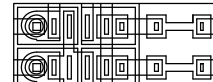
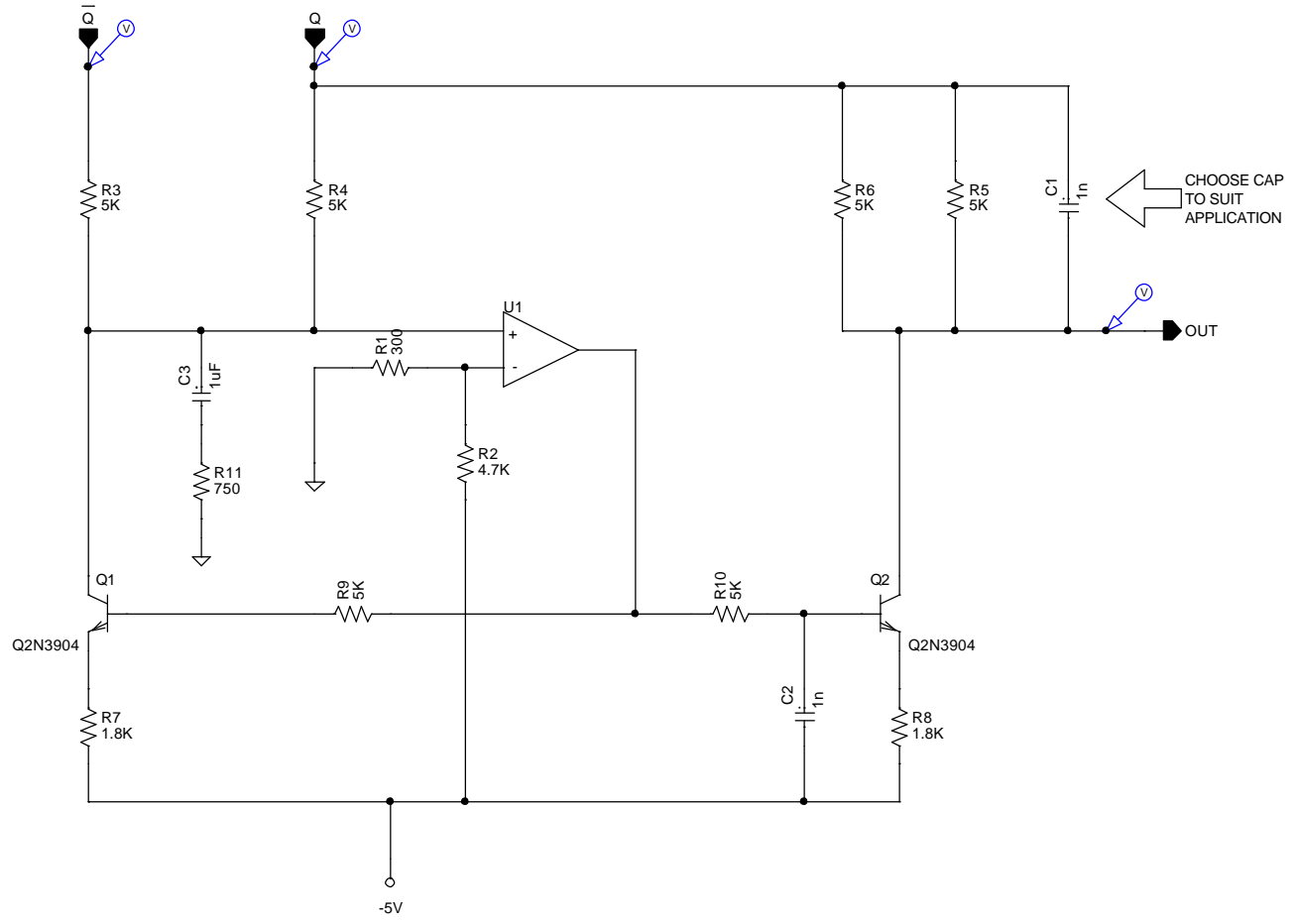
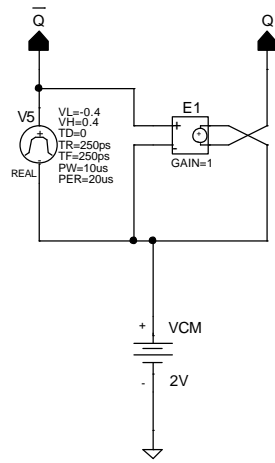


LevelShift_PECL_to_PHEMT_Mirror_Mirror_250MHz



LevelShift_PECL_to_PHEMT_Mirror_Mirror_250MHz_Power_Dissipation_Shown

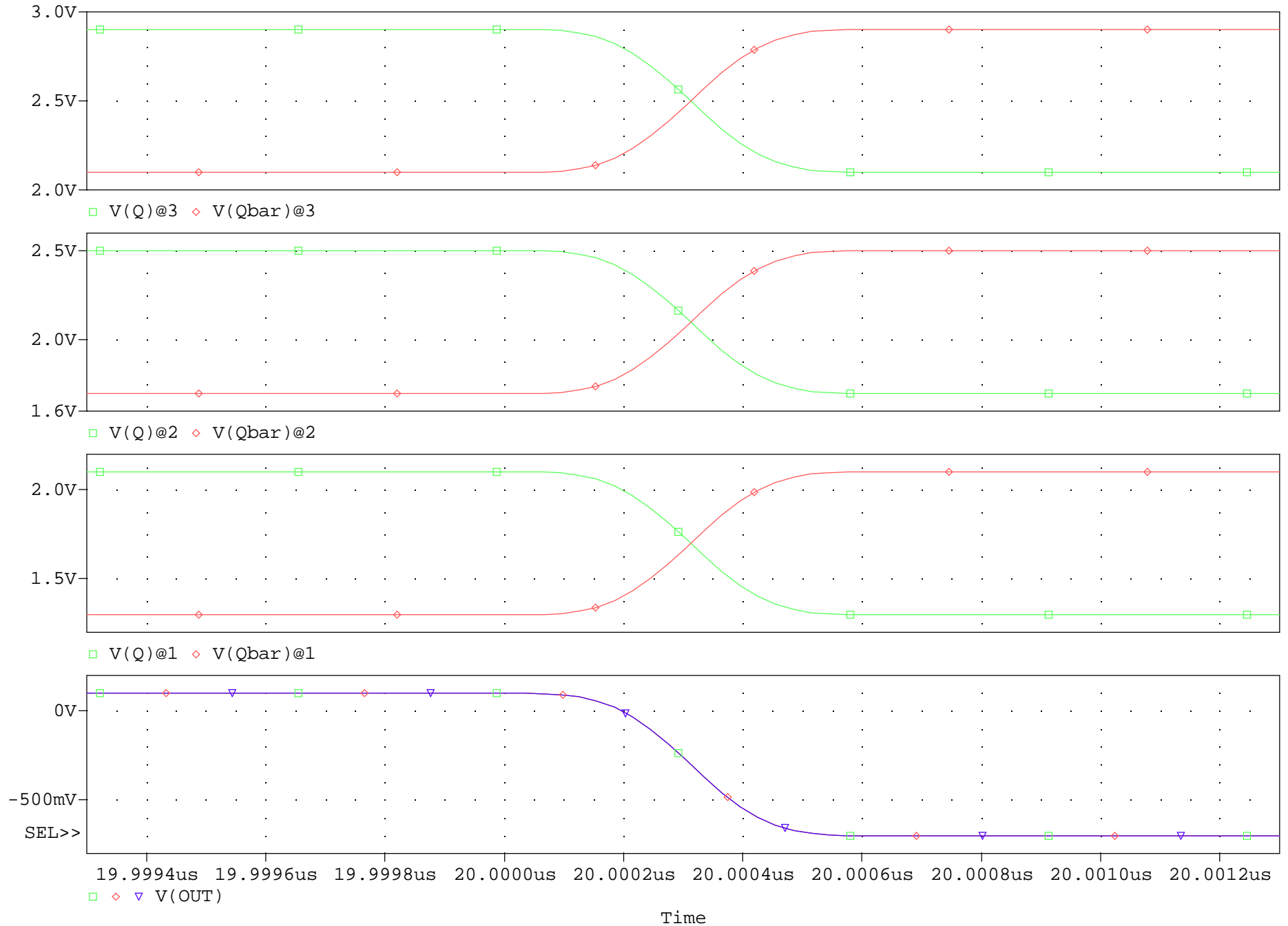


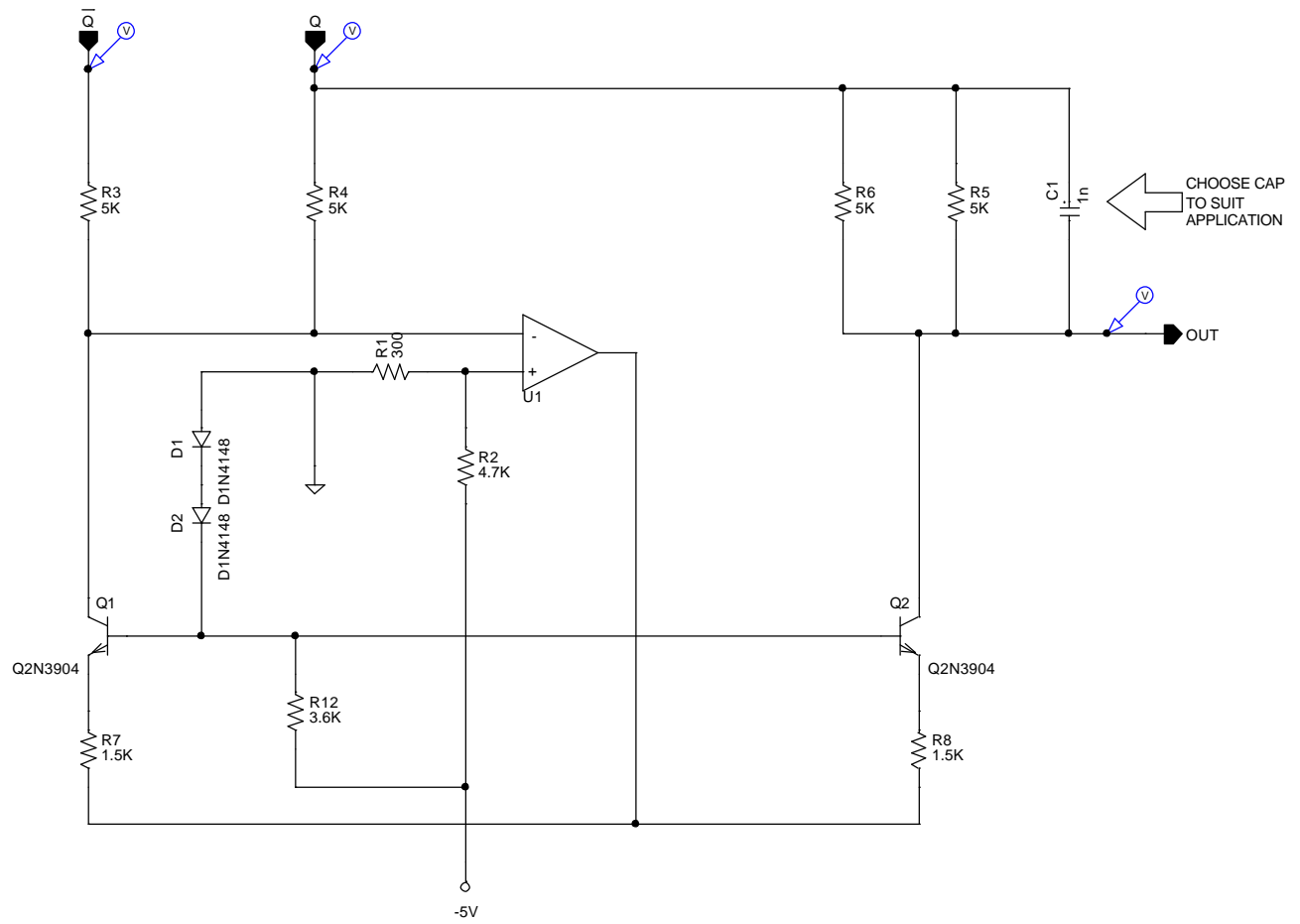
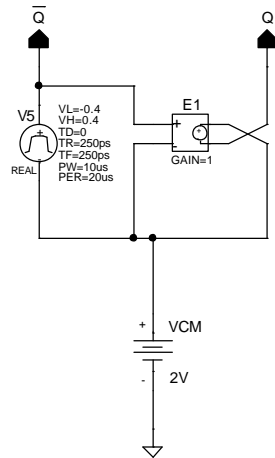


ANALOG INNOVATIONS, Inc.
 824 E. CATHEDRAL ROCK DRIVE
 PHOENIX, AZ 85048-6300
 (480) 460-2350 FAX: (602) 557-0890

Title: LevelShift, PECL to PHEMT, Independent of VCM		
Size A	FileName: ...\\SEDI\\LevelShift_PECL_to_PHEMT_VCM_Independent.sch	REV A
March 9, 2012		Sheet 1 of 1

LevelShift, PECL to PHEMT, Independent of VCM





			ANALOG INNOVATIONS, Inc. 824 E. CATHEDRAL ROCK DRIVE PHOENIX, AZ 85048-6300 (480) 460-2350 FAX: (602) 557-0890
Title: LevelShift, PECL to PHEMT, Independent of VCM... Emitter-Driven Loop			
Size A	FileName: ...\\SED\\LevelShift_PECL_to_PHEMT_VCM_Independent_E.sch	REV A	
March 10, 2012, 8:56 AM		Sheet 1 of 1	

LevelShift, PECL to PHEMT, Independent of VCM... Emitter-Driven Loop

